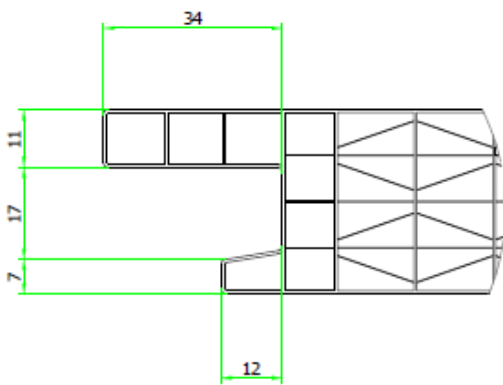
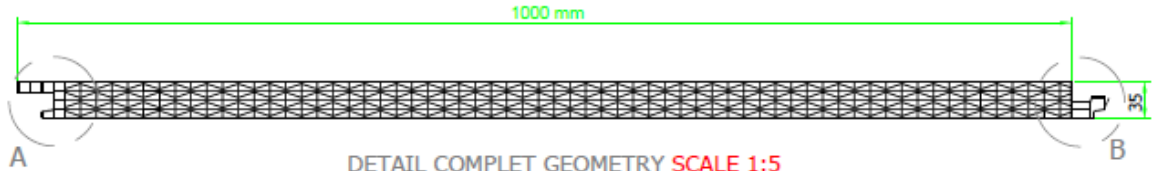
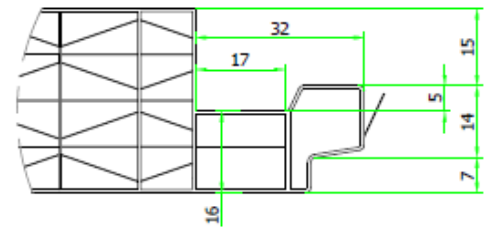


FANOVAMETAL 9X MP
Asimetric - Compatible with fachada METALPANEL

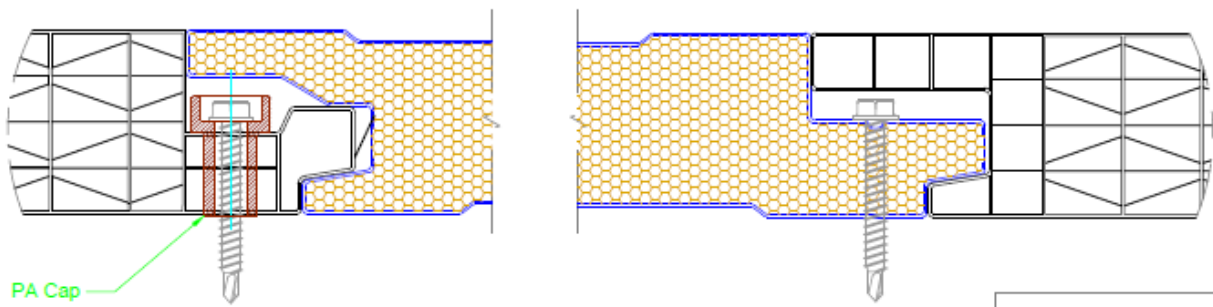
SECCIÓN



BORDER SIDE A DETAIL SCALE 1:1



WING SIDE B DETAIL SCALE 1:1



LACE DETAIL WITH POLYURETANE PANEL OF 35mm SCALE 1:1



STABILIT SUISSE

Via Lische 11/13 -P.O. Box 702
 6855 Stabio - Switzerland
 T. +41 (0)91 641 72 72
 info@stabilitsuisse.com
 www.stabilitsuisse.com

STABILIT ITALIA

Uffici commerciali
 Via Lische 11
 6855 Stabio - Svizzera
 T. +39 349 69 42 669
 info@stabilititalia.com
 www.stabilititalia.com

STABILIT FRANCE

Zone Industrielle Sous Pra
 39360 Chassal - France
 T. +33 (0)384 42 40 08
 stabilitfrance@stabilitfrance.fr
 www.stabilitfrance.fr

STABILIT BENELUX

Verbreepark 31
 2731 BR Benthuizen - Holland
 T. +31 (0)79 343 88 88
 info@stabilitbenelux.nl
 www.stabilitbenelux.nl

STABILIT EUROPA

Autovía A4 km. 412 salida 411
 Apartado de Correos 5022
 14013 Córdoba - España
 T. +34 957 045 956
 info@stabiliteuropa.com
 www.stabiliteuropa.com

FANOVAMETAL 9X MP

Asimetric - Compatible with fachada METALPANEL

TECHNICAL CHARACTERISTICS

	Units	Value	Notes
Number of walls	-	9 in doble X	-
Thickness	mm	35	-
Rib distance	mm	15	-
Cover (useful width)	mm	1000	-
Length	mm	On request	-
Thermal insulation (valor U)	W/m ² K	1,08	-
Light transmission	%	59	Clear (0010)
		39	Opal (0026)
G-value	%	55	Clear (0010)
		48	Opal (0026)
Fire classification	-	B-s1,d0	According to UNE EN 13501-1:2007 (**)
Sound reduction	dB	~ 23	-
Coefficient of thermal expansion	mm/m °C	0,065	-
Service temp. (continuous use)	°C	-40 ÷ +120	-
UV protection	-	Yes	Coextruded on external side

(**) Fire certification could be subject to limitations

Load (kg/m²)

Distance between supports (m)	1,00		1,25		1,50		1,75		2,00		2,25		2,50	
	Pressure	Suction	Pressure	Suction	Pressure	Suction	Pressure	Suction	Pressure	Suction	Pressure	Suction	Pressure	Suction
Fanovametal 9X MP	380	89	300	86	270	82	172	80	117	78	104	76	93	75

• The tables have been obtained according to the experimental results determined by the external laboratory of the Dept. of Continuous Media Mechanics and Theory of Structures of the University of Seville.

• Maximum load values, uniformly distributed in kg/m², with a Serviceability Limit State deflection limitation of L/150 on the sides of the panel for pressure loads and maximum system load values for suction loads.

• The designer must verify the effective loads that will act on the system, as well as the safety coefficients to be applied, taking into account the specific characteristics of the site and the structure in which the polycarbonate panel will be integrated.

Optimal load standard track

Packages	Unit for package	Total units
6	23	138

RESPONSIBILITY ON PRODUCTS: all information contained in our technical sheets, technical manuals and commercial brochures as well as all technical data given verbally and/or written, are based on our best knowledge but they are non-binding information and do not release Client from executing own checking tests of our information data (with particular regards to our technical data) and of suitability of our products to the final use. The use and assembly of our products and of all the projects accomplished with our products and based on our data, cannot be checked by POLIMEROS GI Technical Department and therefore are sole responsibility of the Client. All the information in this documentation may be subject to change by POLIMEROS GI without obligation to provide advance notice of any changes made.

STABILIT SUISSE

Via Lische 11/13 -P.O. Box 702
6855 Stabio - Switzerland
T. +41 (0)91 641 72 72
info@stabilitsuisse.com
www.stabilitsuisse.com

STABILIT ITALIA

Uffici commerciali
Via Lische 11
6855 Stabio - Svizzera
T. +39 349 69 42 669
info@stabilititalia.com
www.stabilititalia.com

STABILIT FRANCE

Zone Industrielle Sous Pra
39360 Chassal - France
T. +33 (0)384 42 40 08
stabilitfrance@stabilitfrance.fr
www.stabilitfrance.fr

STABILIT BENELUX

Verbreepark 31
2731 BR Benthuizen - Holland
T. +31 (0)79 343 88 88
info@stabilitbenelux.nl
www.stabilitbenelux.nl

STABILIT EUROPA

Autovía A4 km. 412 salida 411
Apartado de Correos 5022
14013 Córdoba - España
T. +34 957 045 956
info@stabiliteuropa.com
www.stabiliteuropa.com